

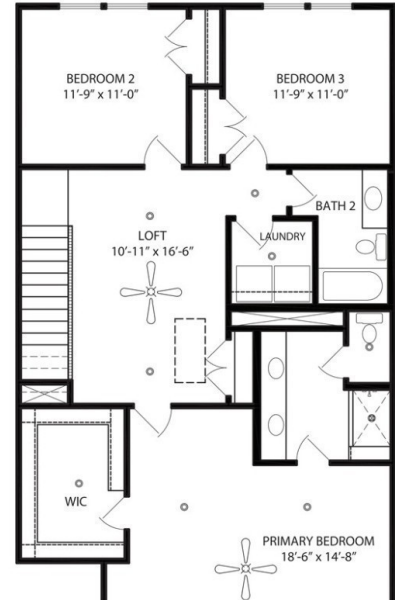
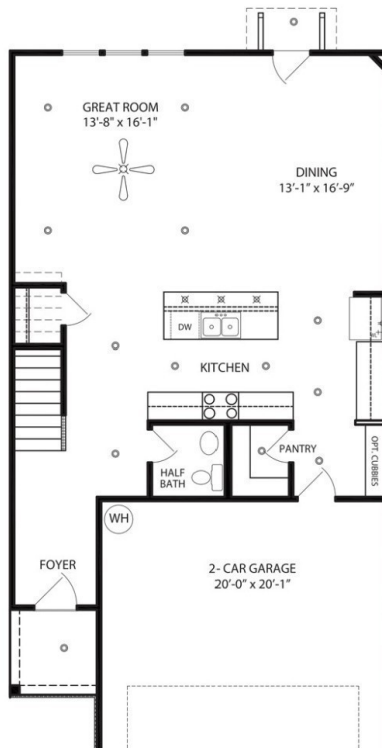
FREDERICKSBURG II

APPROX. AREA	
FIRST LEVEL	894
SECOND LEVEL	1,152
TOTAL LIVING AREA	2,046
GARAGE	418
PORCH	37
TOTAL COVERED	2,501



Marketed By Regent Realty
www.RegentHomesTN.com

In the interest of continuous improvement, Regent Homes reserves the right to make modifications in exterior designs, architectural details, materials and specifications at any time without prior notice. All features, designs, and prices are subject to change without prior notice. Room dimensions and square footage are approximate and floor plans vary per selected builder homesite. The location of the air conditioning unit may vary. The above illustration is for demonstration purposes only. ©2023 Regent Homes LLC.



\$425,900

- 3 beds
- 2 baths
- Residential
- Townhouse
- Active
- 2046 sq ft

1089 JUNE WILDE RIDGE, SPRING HILL, TN, US, 37174

<https://thecottagerealty.com>

Welcome to Harvest Point! Brand New townhomes with Designer touches! Inside the Fredericksburg plan you'll walk into a beautiful kitchen with a centered island open to your spacious living / dining room! Upstairs you'll find our largest owner suite available! Details include a spacious upstairs loft + laundry that separates the owners suite from the [...]



Dana Barnes

Regent Realty

Rooms



Room type	Dimensions
Bedroom 1	19x15
Bedroom 2	12x11
Bedroom 3	12x11
Bonus Room	11x17
Dining Room	13x14
Kitchen	13x16
Living Room	14x16

Building Details

ParkingTotal: 4

Heating: Heat Pump

Exterior material: Fiber Cement, Stone

Parking: Attached, Driveway

NewConstructionYN: Yes

Basement: Slab

Roof: Shingle

Amenities & Features



Waterfront available: No

AttachedGarageYN: Yes

PoolPrivateYN: No

Security Features: Fire Sprinkler System, Security System, Smoke Detector(s)

Amenities: Dishwasher, Disposal, Microwave

GarageYN: Yes

FireplaceYN: No

Cooling: Electric

Utilities: Electricity Available, Water Available

Features: Kitchen Island

